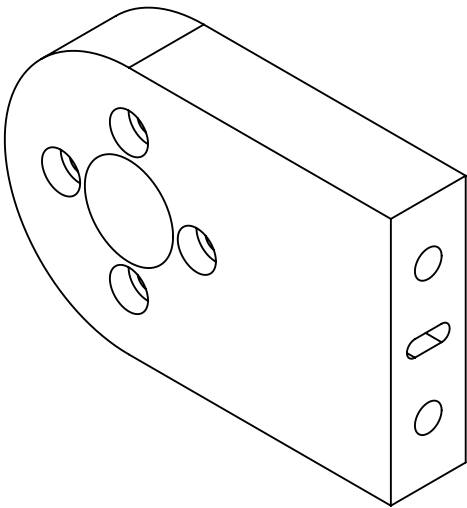
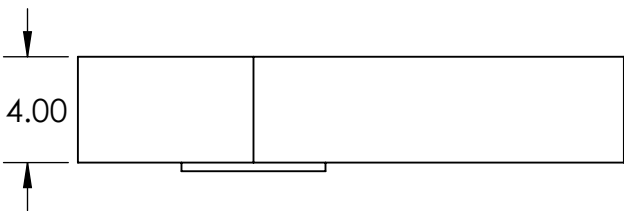
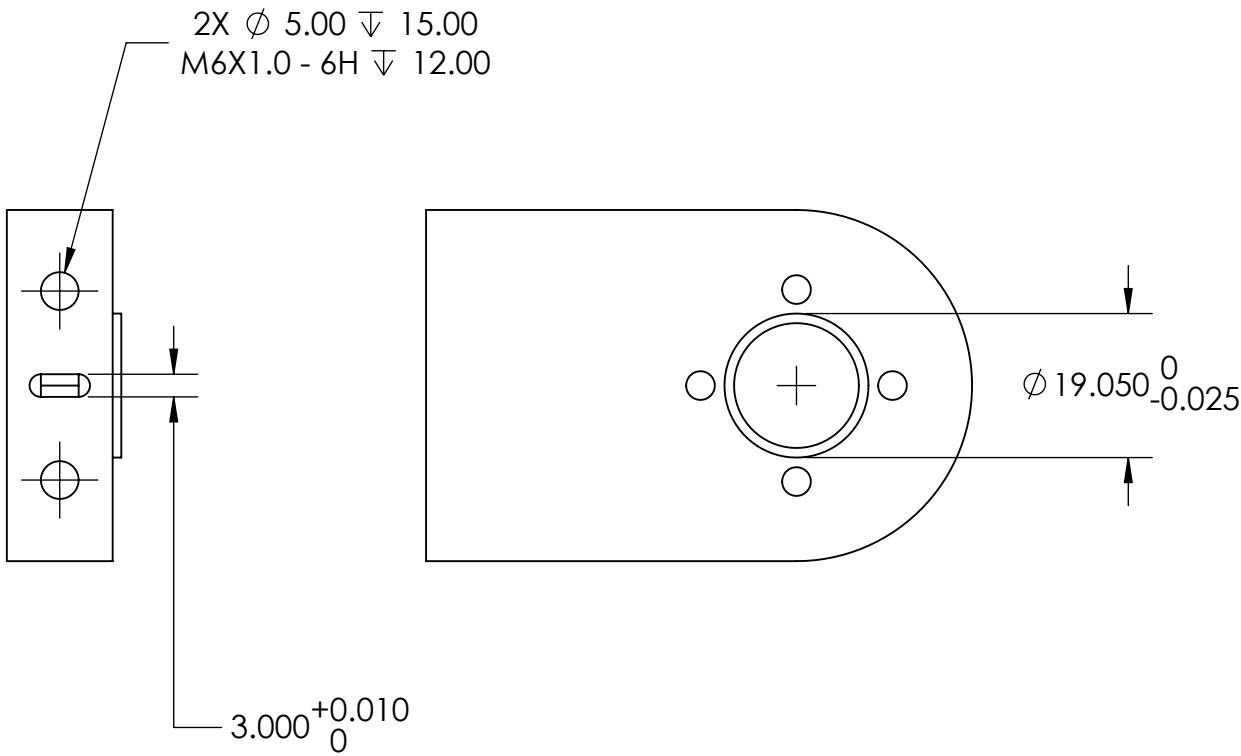
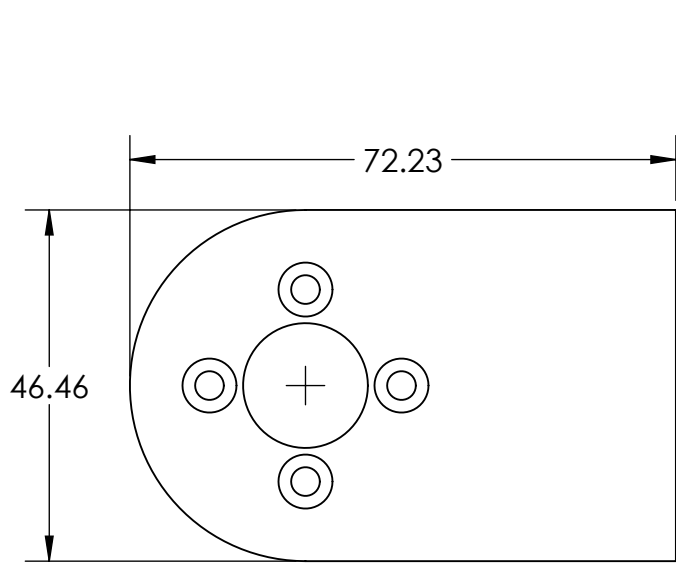


UNLESS OTHERWISE SPECIFIED MANUFACTURE PER ALLEN INSTITUTE WORKMANSHIP STANDARD

MINIMUM CONTENT DRAWING. MANUFACTURE TO 3D MODEL WITHIN +/- 0.25mm UNLESS OTHERWISE SPECIFIED. REFER TO 3D MODEL FOR UNSPECIFIED DIMENSIONS.



REFERENCE ONLY  
SCALE 1:1

MATERIAL 6061 Alloy	UNLESS OTHERWISE SPECIFIED:  DIMENSIONS ARE IN MILLIMETERS TOLERANCES:  DECIMAL    ± .1            ANGULAR: MACH ± 2°  BREAK ALL EDGES .5 MAX INTERPRET PER ASME Y14.5-2018 MAX ROUGHNESS 1.6 micrometers	PROPRIETARY AND CONFIDENTIAL. CONTACT ALLEN INSTITUTE FOR RULES REGARDING HANDLING		ALLEN INSTITUTE		615 Westlake Ave N Seattle, WA 98109, USA Phone: +1-206-548-7000 www.alleninstitute.org	
FINISH Anodized		TITLE: ND Treadmill Running Wheel Sensor Rear Plate (Derived from 0295-500-03)					
TREATMENT As Machined	THIRD ANGLE PROJECTION	DRAWN Joon Jung	DATE 9/27/2023	SIZE B	DWG. NO. 0326-100-04		REV X05
COLOR Black		DO NOT SCALE DRAWING		SCALE: 1:1	WEIGHT (g):		SHEET 1 OF 1