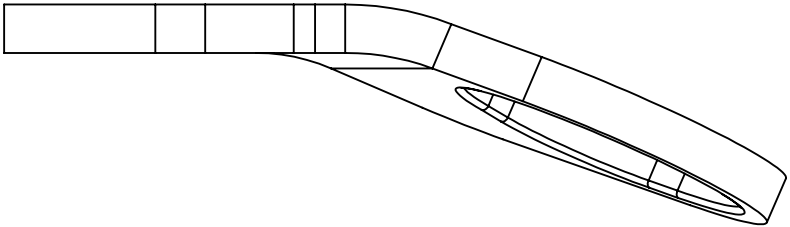
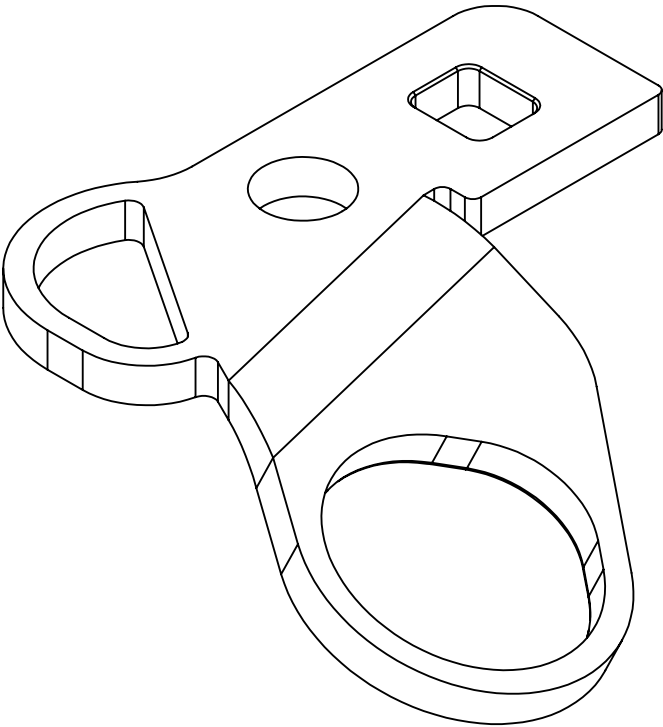
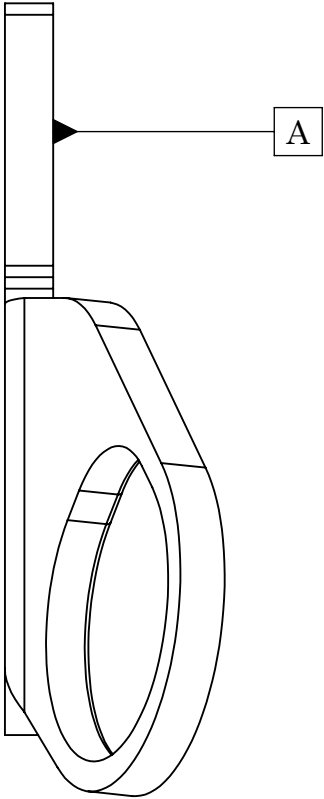
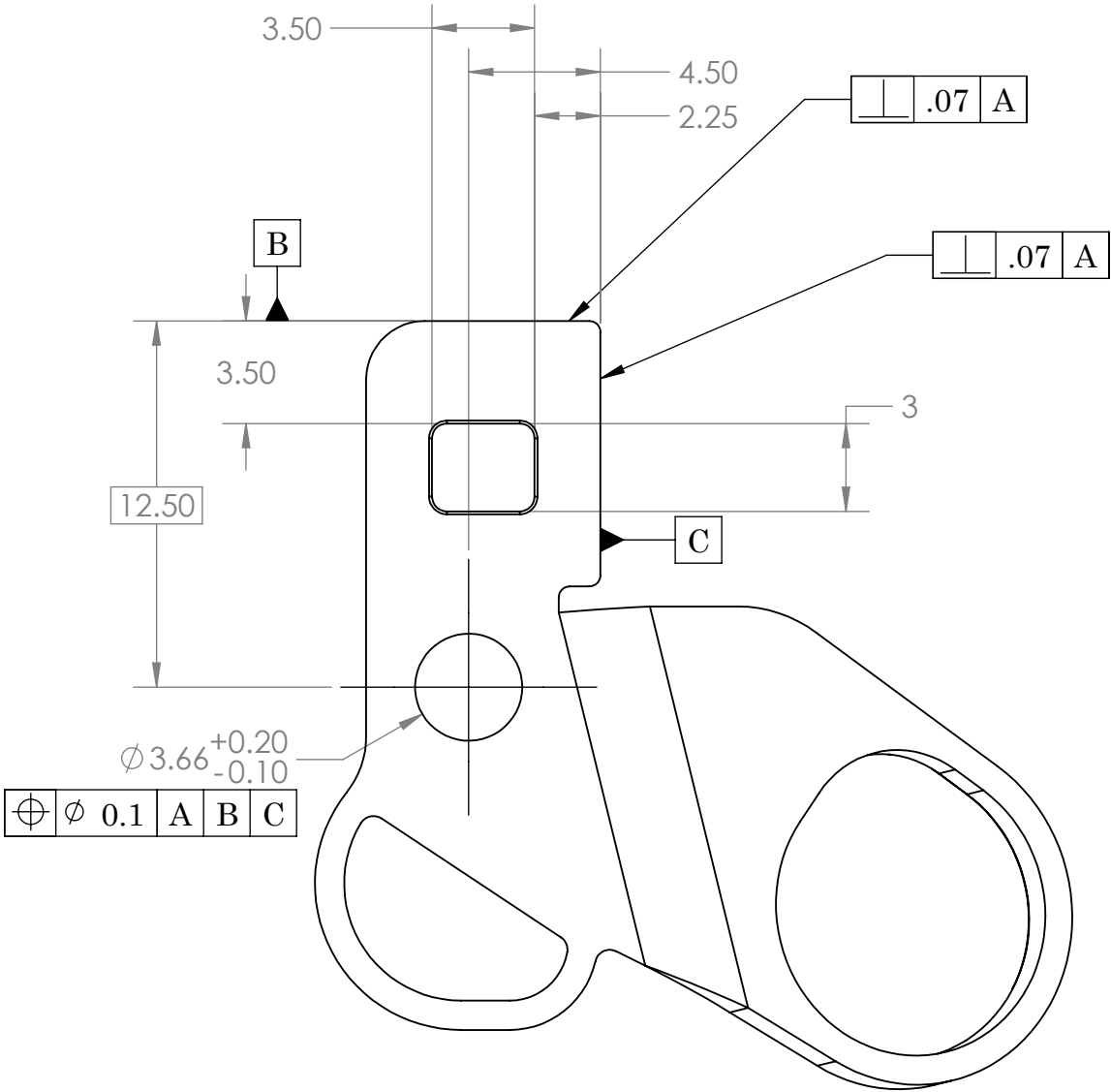



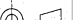
UNLESS OTHERWISE SPECIFIED MANUFACTURE PER ALLEN INSTITUTE WORKMANSHIP STANDARD

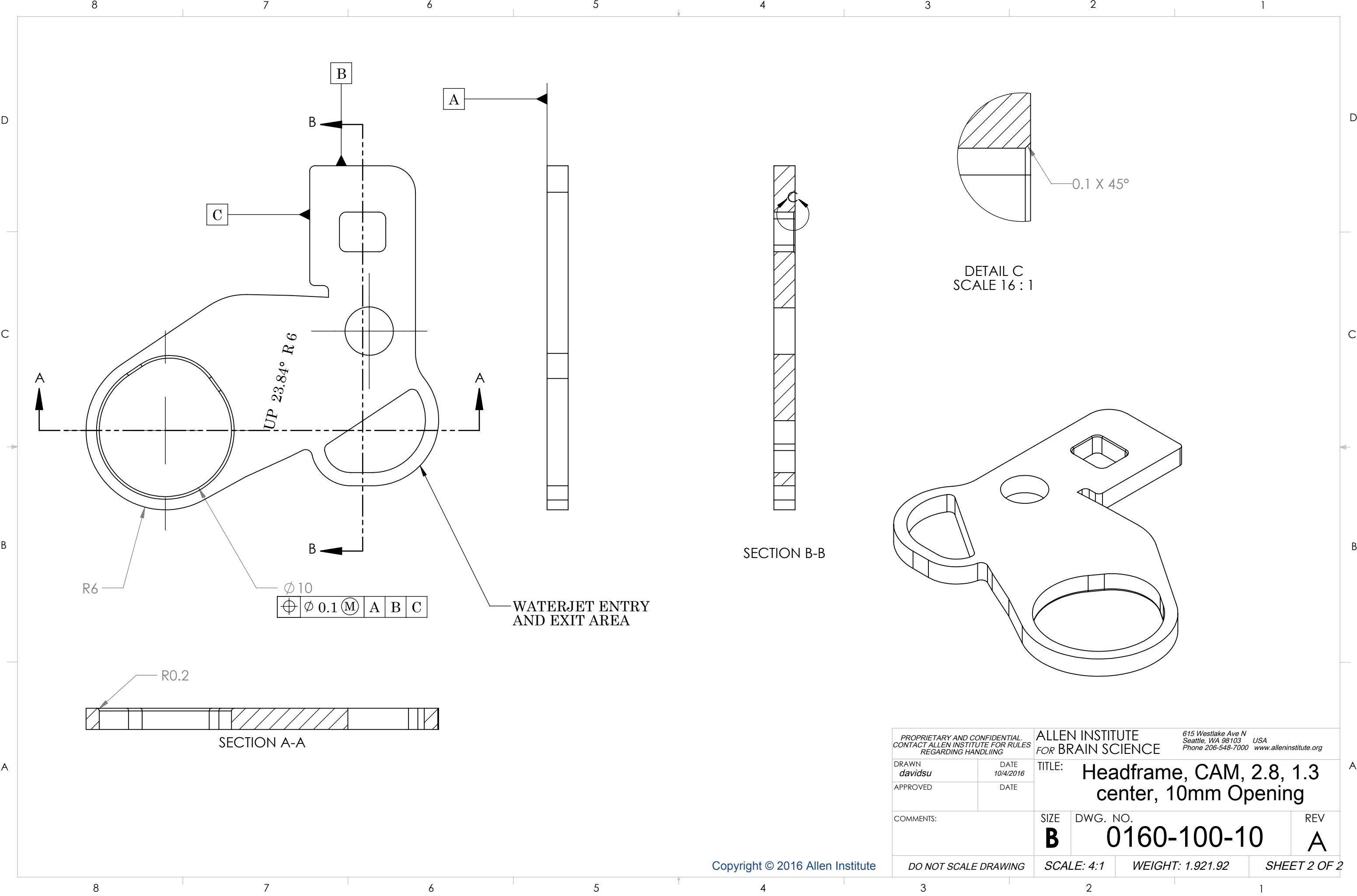
1. MATERIAL SUPPLIED BY ALLEN INSTITUTE FOR BRAIN SCIENCE
2. BREAK EDGES AS SHOWN
3. TUMBLE DEBURR AFTER FORMING
4. SHARP INSIDE CORNERS INDICATED ON FLAT BLANK ARE MODELLING ARTIFACTS - RADIUS ACCEPTABLE
5. EDGE QUALITY EXTRA FINE MINIMIZING TAPER
6. FORM WITH WIDE SIDE OF TAPER ON DATUM A

REVISIONS			
REV.	DESCRIPTION	DATE	APRVD



Copyright © 2016 Allen Institute

MATERIAL Ti-6Al-4V Solution treated and aged (SS) N/A	UNLESS OTHERWISE SPECIFIED:  DIMENSIONS ARE IN MILLIMETERS TOLERANCES:  DECIMAL    ± .1            ANGULAR: MACH ± 2°     BREAK ALL EDGES .5 MAX INTERPRET PER ASME Y14.5-2009 MAX ROUGHNESS 1.6 micrometers	PROPRIETARY AND CONFIDENTIAL. CONTACT ALLEN INSTITUTE FOR RULES REGARDING HANDLING		 ALLEN INSTITUTE for BRAIN SCIENCE <i>Fueling Discovery</i>	615 Westlake Ave N Seattle, WA 98109 Phone 206-548-7000    USA www.alleninstitute.org			
		DRAWN davidsu	DATE 10/4/2016		TITLE: Headframe, CAM, 2.8, 1.3 center, 10mm Opening			
		APPROVED	DATE					
TREATMENT N/A			COMMENTS:		SIZE B	DWG. NO. 0160-100-10	REV A	
COLOR N/A		THIRD ANGLE PROJECTION 		DO NOT SCALE DRAWING		SCALE: 4:1	WEIGHT (g): 1.921.92	SHEET 1 OF 2



PROPRIETARY AND CONFIDENTIAL. CONTACT ALLEN INSTITUTE FOR RULES REGARDING HANDLING		ALLEN INSTITUTE FOR BRAIN SCIENCE		615 Westlake Ave N Seattle, WA 98103 USA Phone 206-548-7000 www.alleninstitute.org	
DRAWN davidsu	DATE 10/4/2016	TITLE: Headframe, CAM, 2.8, 1.3 center, 10mm Opening			
APPROVED	DATE				
COMMENTS:		SIZE B	DWG. NO. 0160-100-10		REV A
		DO NOT SCALE DRAWING		SCALE: 4:1	WEIGHT: 1.921.92