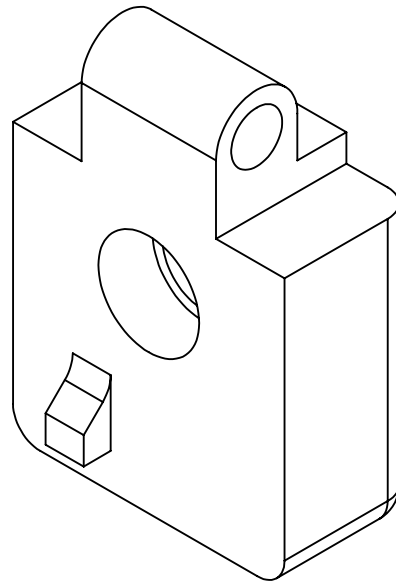
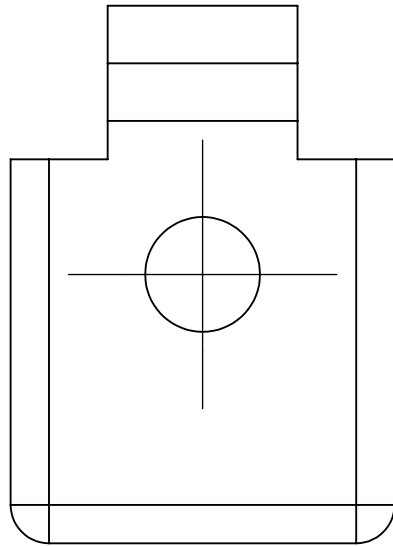
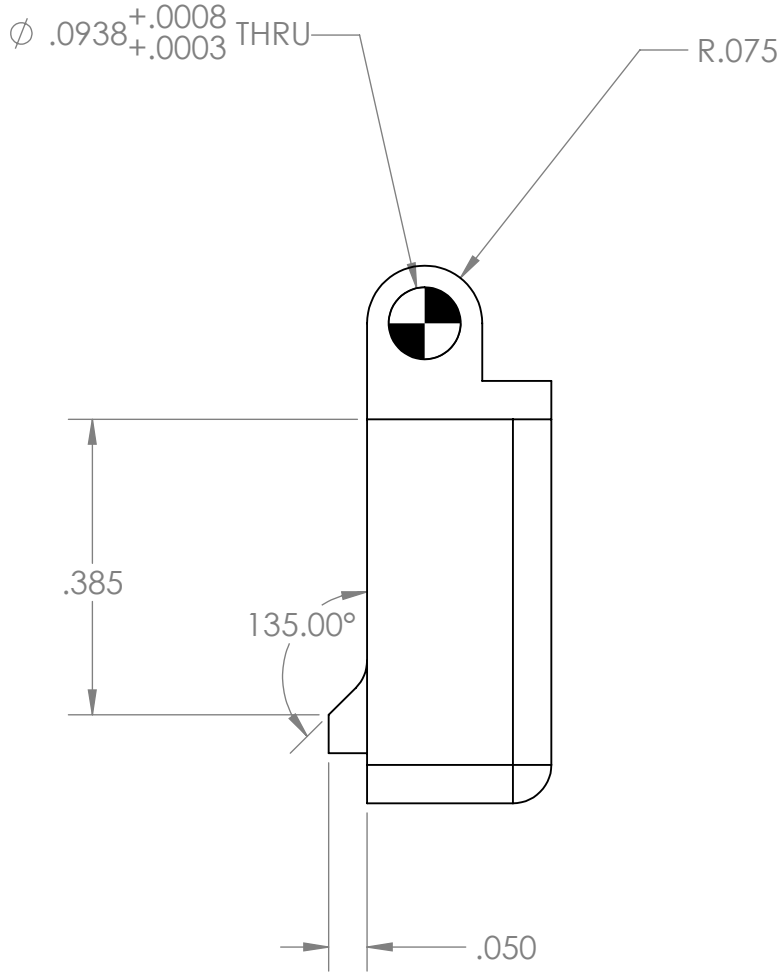
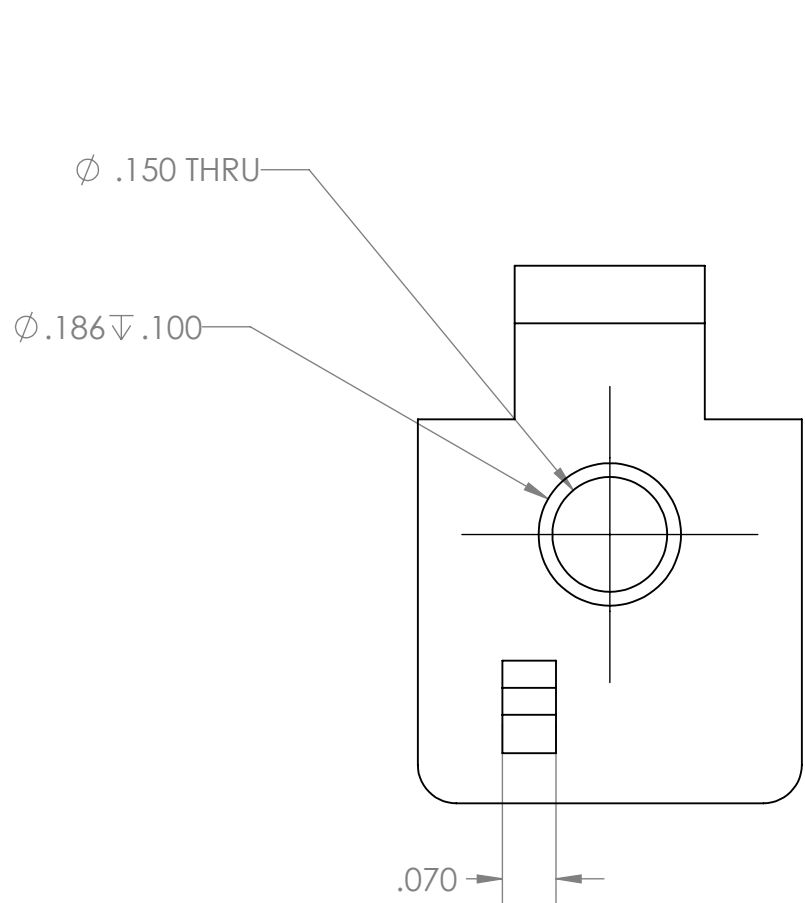

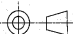


UNLESS OTHERWISE SPECIFIED MANUFACTURE PER ALLEN INSTITUTE WORKMANSHIP STANDARD

REVISIONS			
REV.	DESCRIPTION	DATE	APRVD



MATERIAL	<div>UNLESS OTHERWISE SPECIFIED:</div> <div>DIMENSIONS ARE IN INCHES</div> <div>TOLERANCES: FRACTIONAL $\pm 1/64$</div> <div>DECIMAL</div> <div>.XXXX $\pm .0005$</div> <div>.XXX $\pm .005$</div> <div>.XX $\pm .010$</div> <div>.X $\pm .030$</div> <div>BREAK ALL EDGES .02 MAX</div> <div>INTERPRET PER ASME Y14.5-2009</div> <div>MAX ROUGHNESS: 63 MICROINCH</div>	PROPRIETARY AND CONFIDENTIAL CONTACT ALLEN INSTITUTE FOR RULES REGARDING HANDLING		<div> ALLEN INSTITUTE for BRAIN SCIENCE <i>Fueling Discovery</i></div> <div>615 Westlake Ave N Seattle, WA 98109 USA Phone 206-548-7000 www.alleninstitute.org</div>			
FINISH		DRAWN davidsu	DATE 9/26/2016	TITLE: HINGE CLAMP, CRANIOTOMY			
TREATMENT		APPROVED	DATE				
		COMMENTS:		SIZE B	DWG. NO. 0155-100-04	REV A-00	
COLOR							
THIRD ANGLE PROJECTION			DO NOT SCALE DRAWING		SCALE: 4:1	WEIGHT (lb): 0.010.01	SHEET 1 OF 1