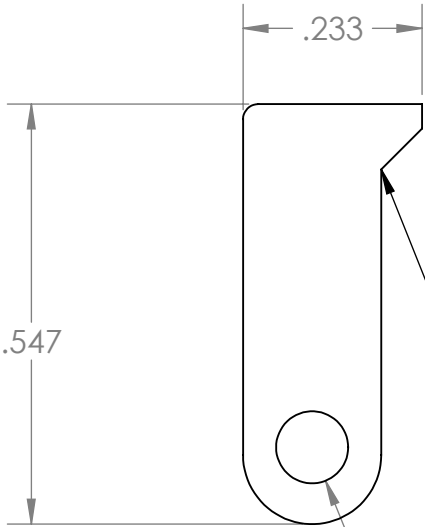
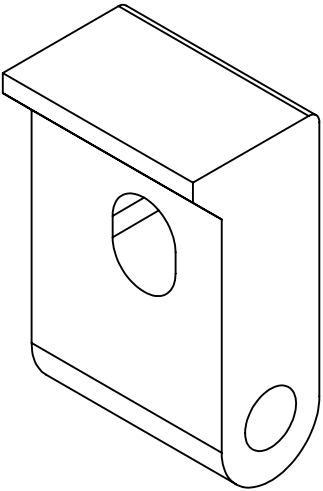


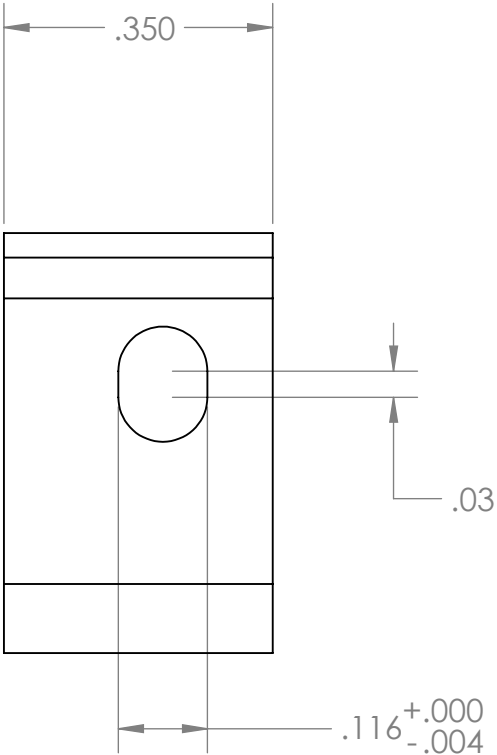
UNLESS OTHERWISE SPECIFIED MANUFACTURE PER ALLEN INSTITUTE WORKMANSHIP STANDARD



REVISIONS			
REV.	DESCRIPTION	DATE	APRVD



INTERNAL CORNER SHARP
.005" MAX RADIUS

Ø .094^{+.001}_{-.000} THRU ALL
CLEARANCE FOR 3/16 DOWEL PIN



MATERIAL CRES 17-4 Annealed	UNLESS OTHERWISE SPECIFIED: DIMENSIONS ARE IN INCHES TOLERANCES: FRACTIONAL ± 1/64 DECIMAL .XXXX ± .0005 .XXX ± .005 .XX ± .010 .X ± .030 BREAK ALL EDGES .02 MAX INTERPRET PER ASME Y14.5-2009 MAX ROUGHNESS: 63 MICROINCH	PROPRIETARY AND CONFIDENTIAL CONTACT ALLEN INSTITUTE FOR RULES REGARDING HANDLING		 615 Westlake Ave N Seattle, WA 98109 USA Phone 206-548-7000 www.alleninstitute.org	
		DRAWN <i>davidsu</i>	DATE 4/17/2017	TITLE: Clamp, Hinged	
		APPROVED	DATE		
		COMMENTS:		SIZE B	DWG. NO. 0160-300-09
TREATMENT				REV X02	
COLOR		THIRD ANGLE PROJECTION 		DO NOT SCALE DRAWING	SCALE: 4:1
				WEIGHT (lb): 0.010.01	SHEET 1 OF 1